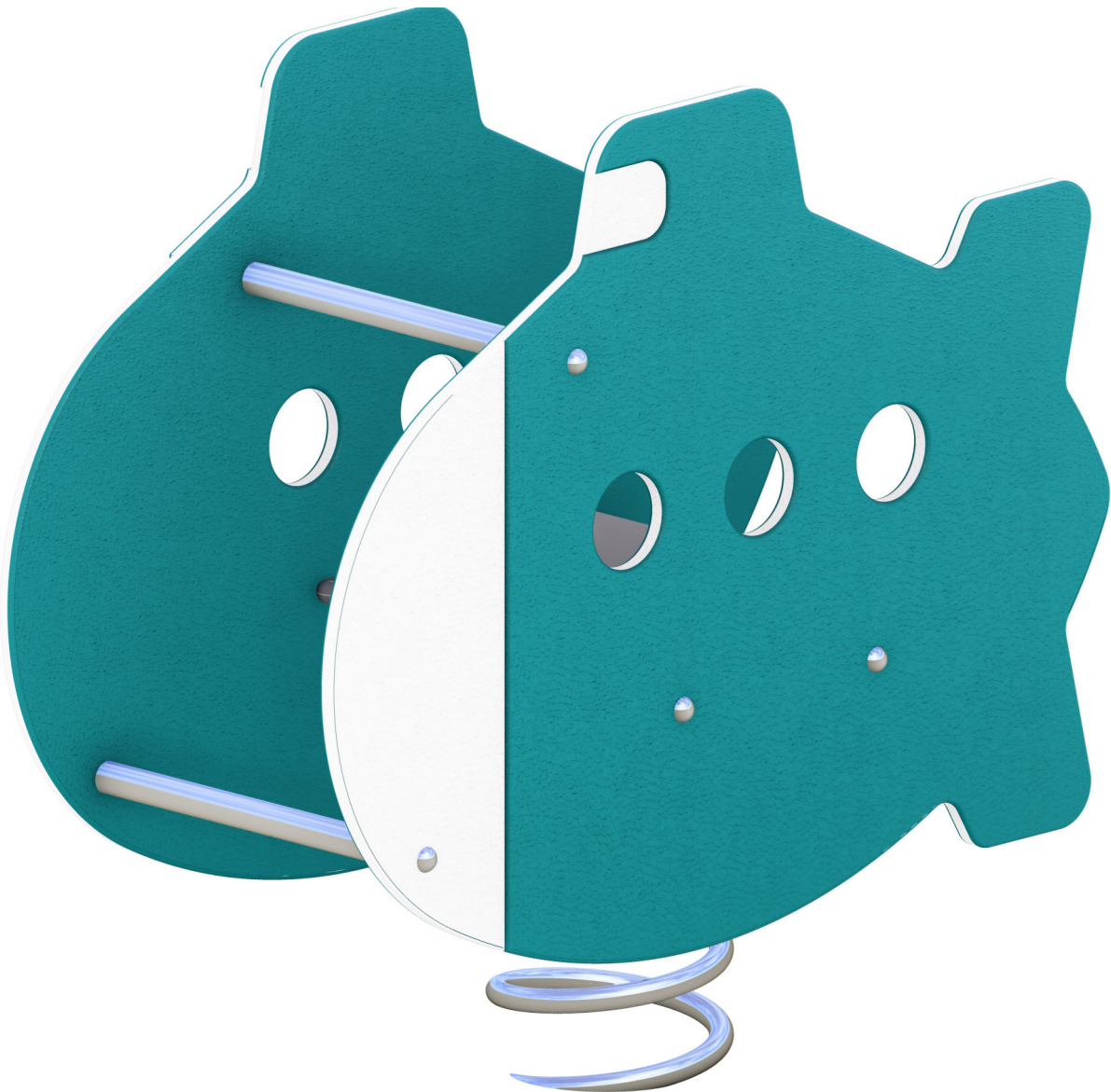


Submarine Rocker

A-SPR-4002

Dive into adventure with the Submarine Rocker, perfect for little explorers and ocean imaginations.



Colour Options: 

Standards
Complies with relevant Australian Standards including: AS 4685:2021 (P1-6) | AS 4685.0:2017 | AS4422 (Int):2022

*All information is commercial in confidence and is the property of The Play Collective. For details regarding Australian standards, warranties, insurances, QA and installation, please contact your local office. All information is correct as at February 2024.

Specifications

Age range: 1-8 years
Number of play elements: 1
Equipment size: 890mm x 410mm
Equipment height: 850mm
Fall zone: 3300mm x 3300mm
Max fall height: 400mm

Play Types



Materials

Material specs
Frame: Alloy Steel
Fasteners: Stainless Steel
Powder Coating: Dulux / Interpon
Plastic: HDPE

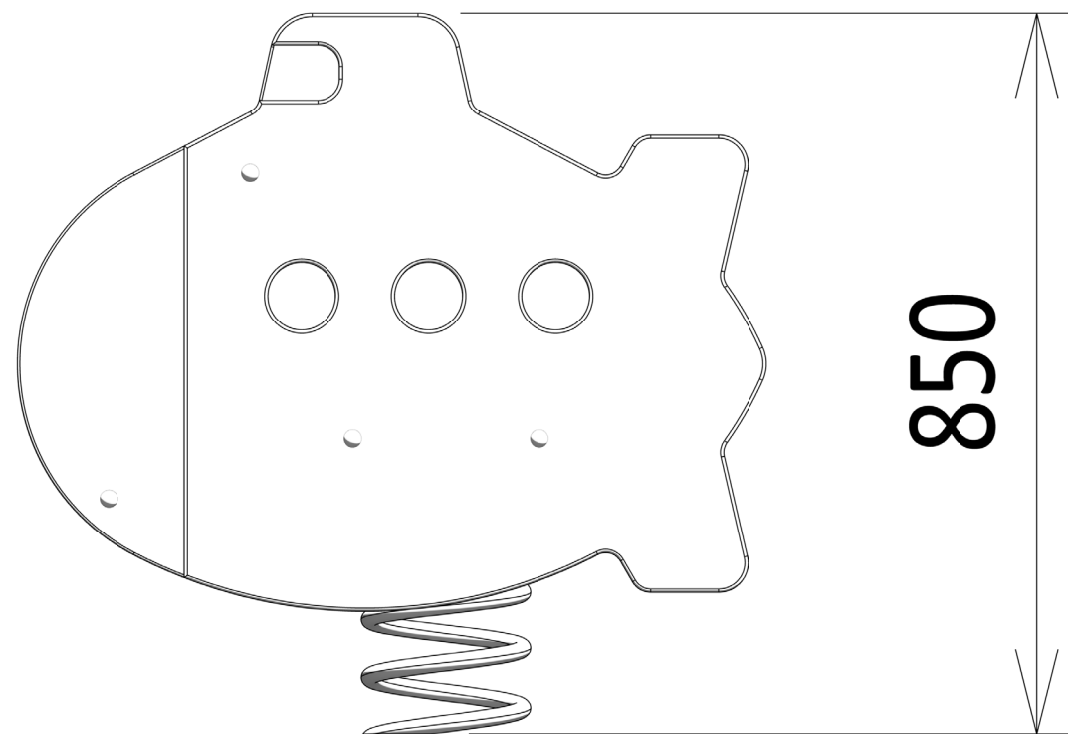
Submarine Rocker

A-SPR-4002

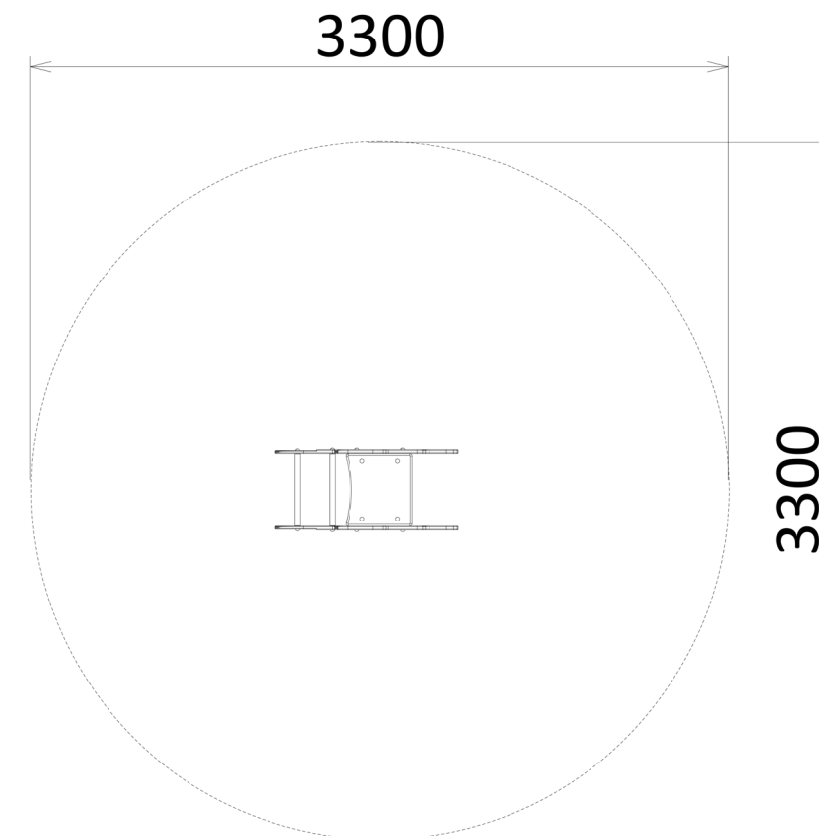


PlayCo

Elevation



Plan View



To learn more about our warranty, compliance, materials, or colour palette and customisation options, contact PlayCo:

1800 655 041 | hello@playco.com.au | playco.com.au

PlayCo

RhinoPlay
PlayCo

PlayOn
PlayCo

PlayWorks
PlayCo

ForPark
PlayCo

ASpace
PlayCo