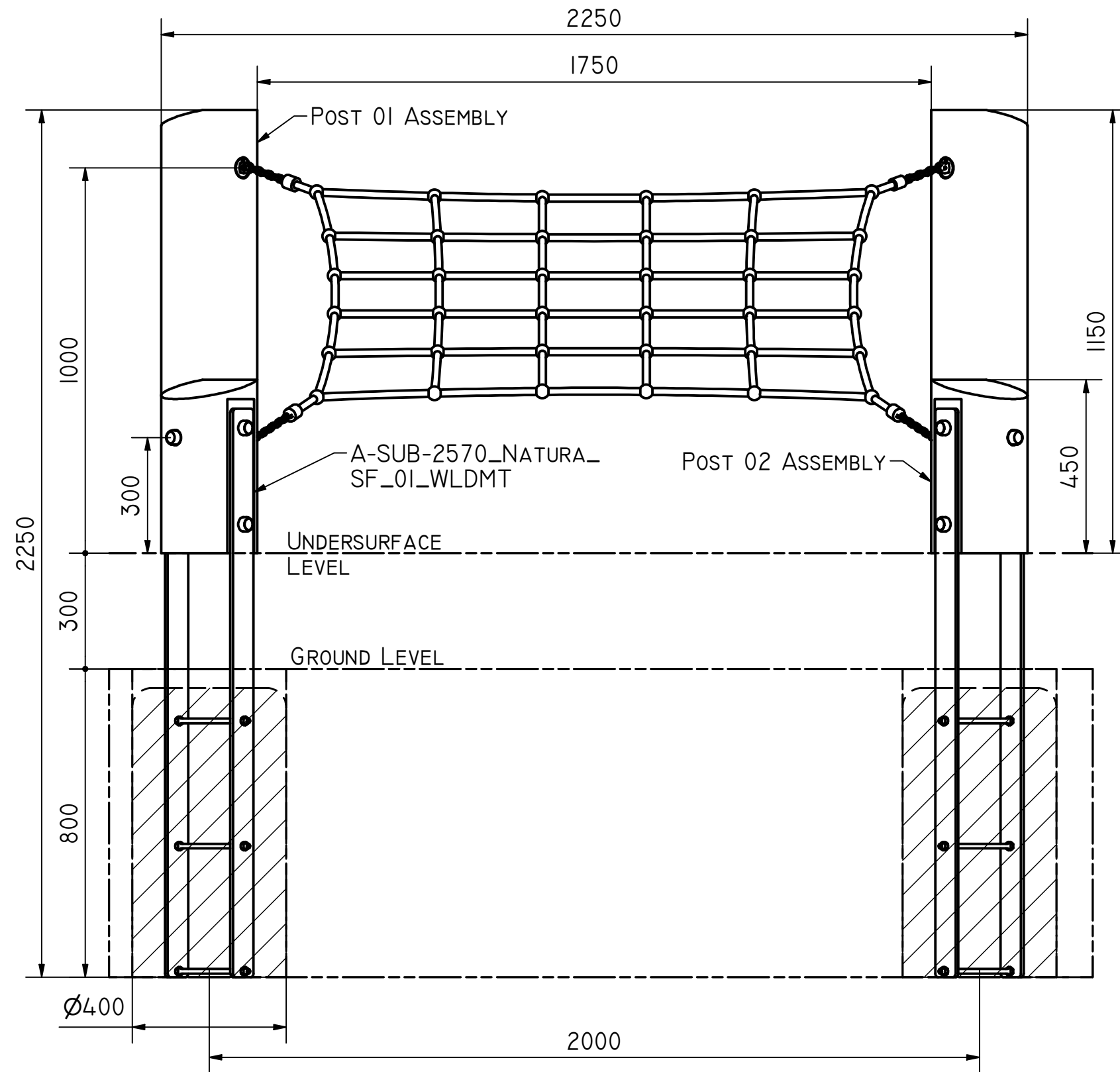




FOOTING QUANTITIES AND DEPTHS
FROM GROUND LEVEL

ITEM	QTY	HOLE DIAMETER	HOLE DEPTH
SF INCLINED 2x2	4	400	800

NOTE:

- THIS PRODUCT IS DESIGNED FOR 300MM SOFT FALL. CHECK THE PROPOSED ON SITE SOFT FALL DEPTH. IF IT IS NOT 300MM PLEASE ADJUST DEPTHS OF POST HOLES ACCORDINGLY, TO ACHIEVE CORRECT OVERALL SUBSURFACE DEPTH. THIS WILL MAINTAIN CORRECT HEIGHT OF EQUIPMENT ABOVE UNDERSURFACE LEVEL.



JOB N°	PLANNED BY		UNLESS STATED OTHERWISE - ALL DIMENSIONS ARE IN MILLIMETRES.		
	PLAN DATE		GENERAL TOLERANCES: DIN ISO 2768-MK		
JOB NAME	MADE BY	DRAWN	LCTC	ITEM N°	NET, SF INCLINED 2x2
		DATE	9/2/2024	A-NAT-2278	
	MFG DATE	CHECKED	STOCK / LEGACY N°		DRAWING N°
					A-NAT-2278-001

© 2024 THE PLAY COLLECTIVE ABN 28 101 472 619. THE INFORMATION CONTAINED IN THIS DRAWING IS THE SOLE PROPERTY OF THE PLAY COLLECTIVE. ANY REPRODUCTION IN PART OR WHOLE WITHOUT THE WRITTEN PERMISSION OF THE PLAY COLLECTIVE IS PROHIBITED. ANY UNCERTAIN DIMENSIONS ARE TO BE CONFIRMED BY PLAY COLLECTIVE BEFORE COMMENCEMENT OF MANUFACTURING.

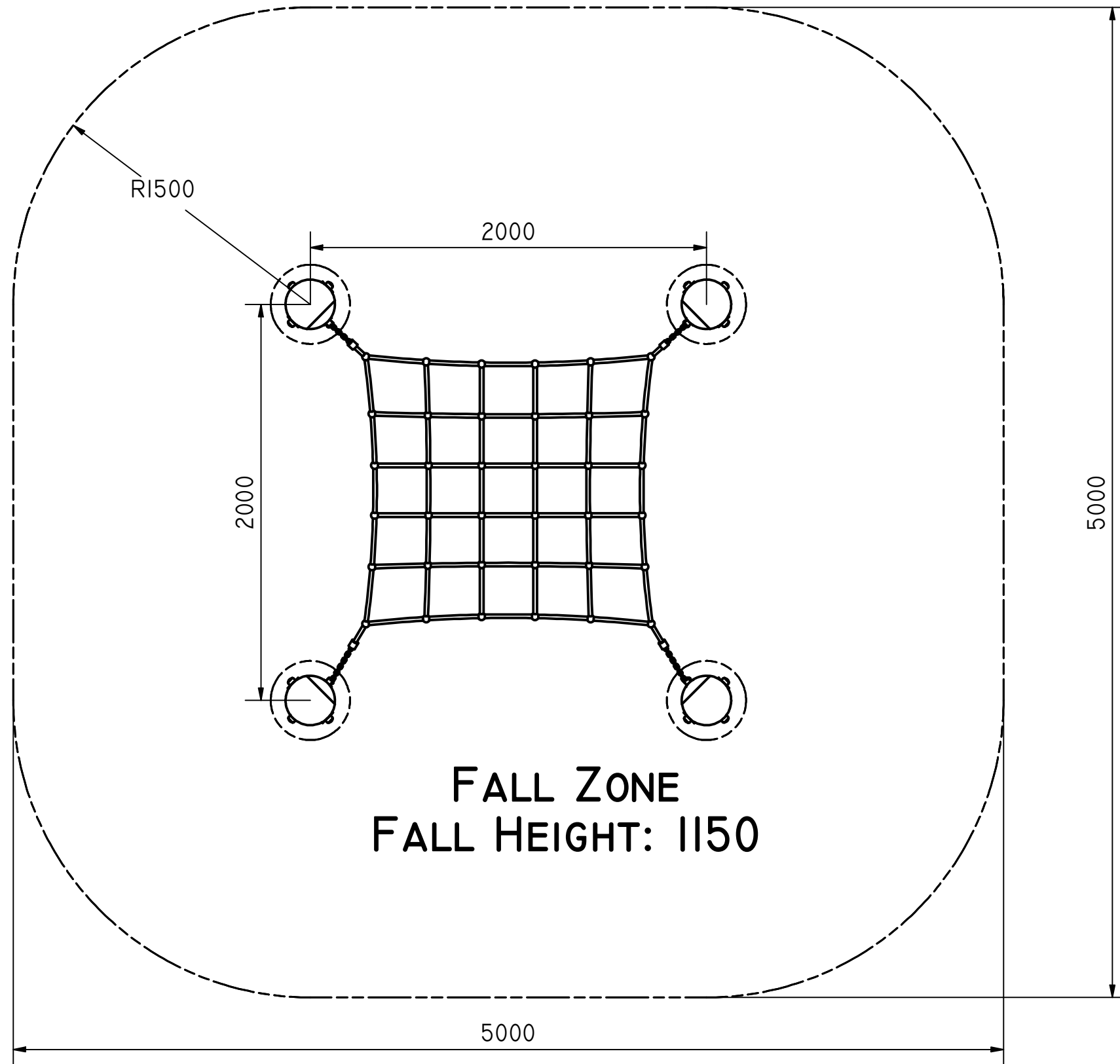
REV	SCALE: NTS	SHT 1 OF 2	A3
-----	------------	------------	----



FOOTING QUANTITIES AND DEPTHS
FROM GROUND LEVEL

ITEM	QTY	HOLE DIAMETER	HOLE DEPTH
SF INCLINED 2x2	4	400	800

NOTE:

- THIS PRODUCT IS DESIGNED FOR 300MM SOFT FALL. CHECK THE PROPOSED ON SITE SOFT FALL DEPTH. IF IT IS NOT 300MM PLEASE ADJUST DEPTHS OF POST HOLES ACCORDINGLY, TO ACHIEVE CORRECT OVERALL SUBSURFACE DEPTH. THIS WILL MAINTAIN CORRECT HEIGHT OF EQUIPMENT ABOVE UNDERSURFACE LEVEL.



JOB N°	PLANNED BY		UNLESS STATED OTHERWISE - ALL DIMENSIONS ARE IN MILLIMETRES.					
	PLAN DATE		GENERAL TOLERANCES: DIN ISO 2768-MK					
JOB NAME	MADE BY	DRAWN	LCTC	ITEM N°	NET, SF INCLINED 2x2			
		DATE	9/2/2024	A-NAT-2278				
	MFG DATE	CHECKED	STOCK / LEGACY N°		DRAWING N°			
					A-NAT-2278-002			
© 2024 THE PLAY COLLECTIVE ABN 28 101 472 619. THE INFORMATION CONTAINED IN THIS DRAWING IS THE SOLE PROPERTY OF THE PLAY COLLECTIVE. ANY REPRODUCTION IN PART OR WHOLE WITHOUT THE WRITTEN PERMISSION OF THE PLAY COLLECTIVE IS PROHIBITED. ANY UNCERTAIN DIMENSIONS ARE TO BE CONFIRMED BY PLAY COLLECTIVE BEFORE COMMENCEMENT OF MANUFACTURING.					REV	SCALE: NTS	SHT 2 OF 2	A3